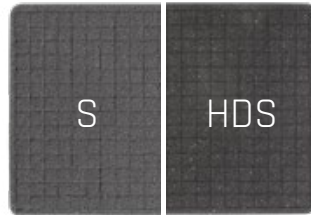
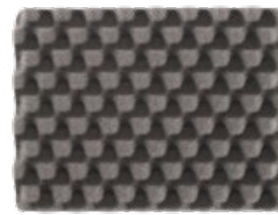


+



+



=



BASE FOAM

1 x 10 mm / 1 x 0.39 inch

CUBED FOAM

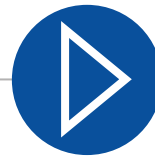
2 x 33 mm / 2 x 1.30 inch

CONVOLUTED FOAM

1 x 35 mm / 1 x 1.38 inch

H115

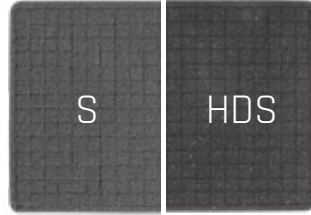
S / HDS



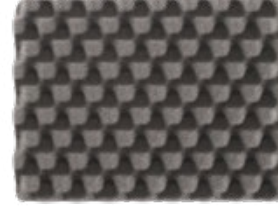
CUBED FOAM TUTORIAL



+



+



=



BASE FOAM

1 x 10 mm / 1 x 0.39 inch

CUBED FOAM

2 x 55 mm / 2 x 2.16 inch

CONVOLUTED FOAM

1 x 35 mm / 1 x 1.38 inch

H160

S / HDS